



The Nedeva was designed and built for Mr. Stotesbury by the New York Yacht, Launch & Engine Company; Grace Hyman Hutchings and Rebecca Thomson Dunphy were the decorators

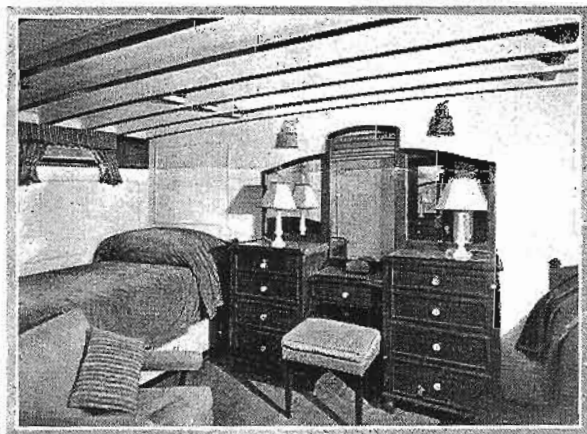
THE NEDEVA

A comfortable cruiser

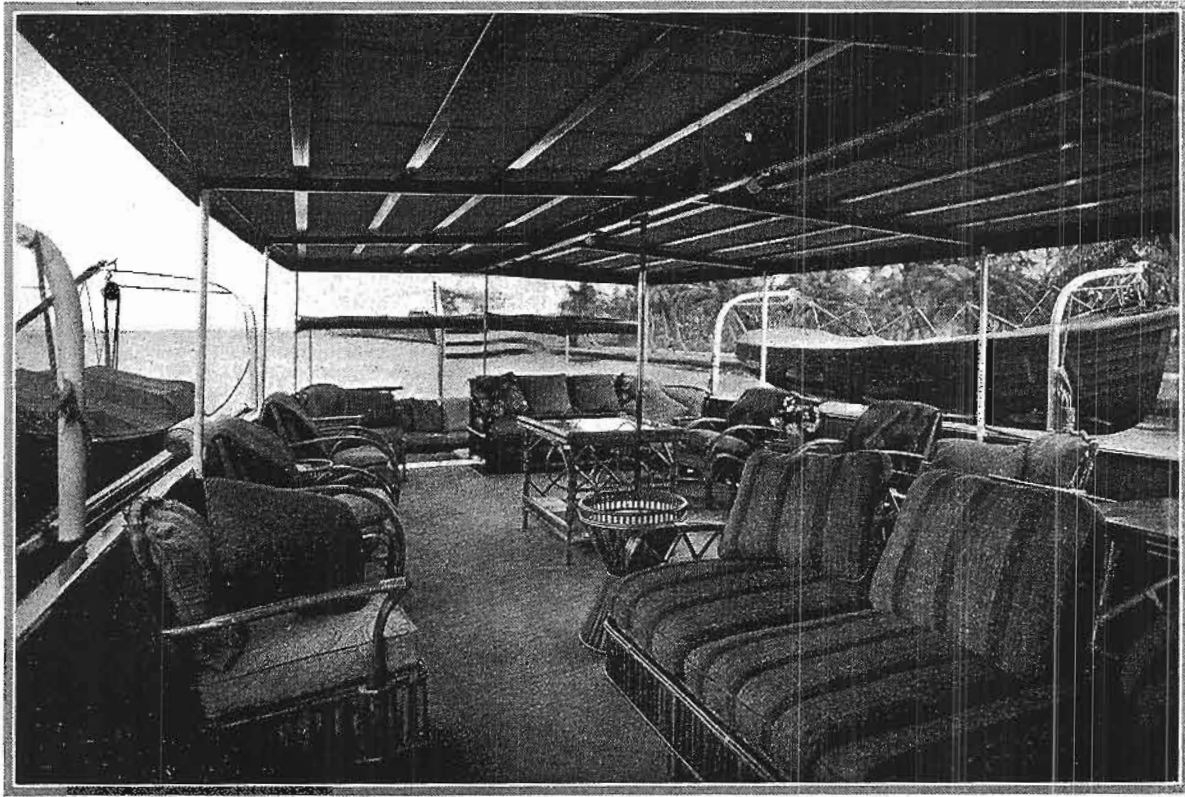
Photographs by F. E. GEISLER



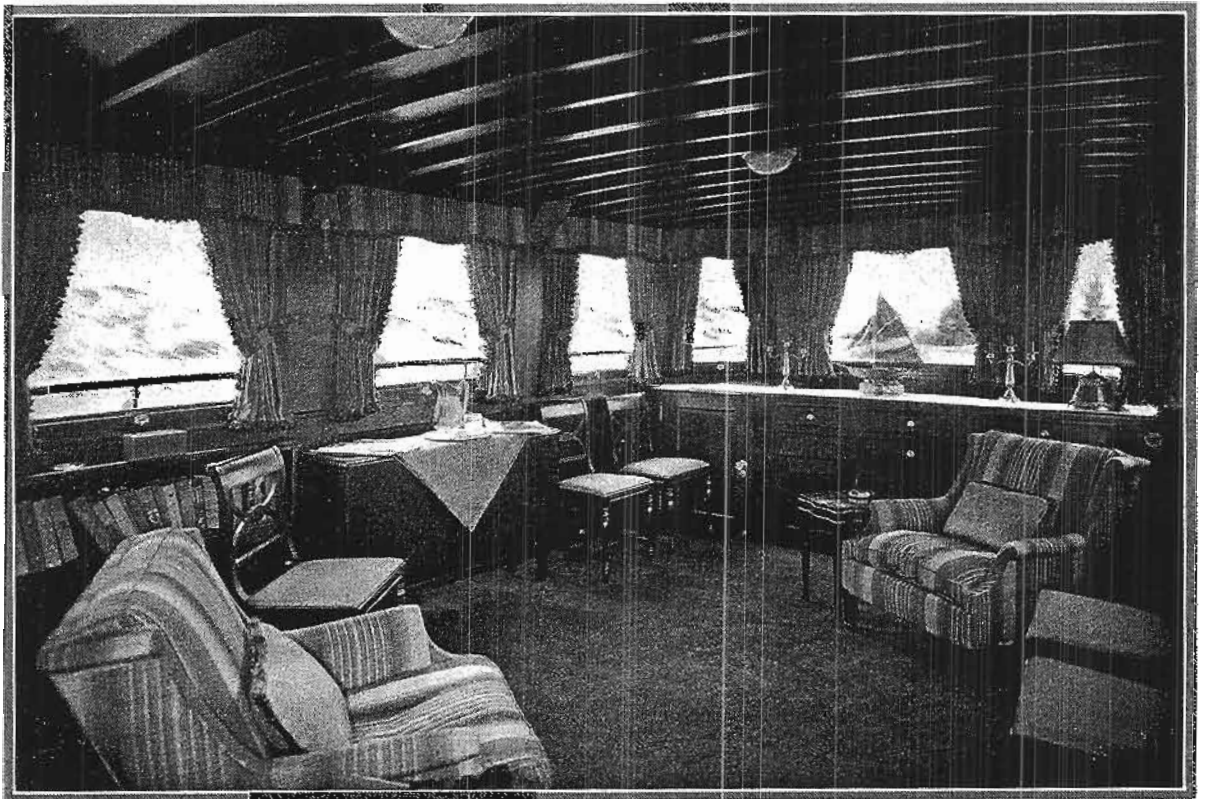
Edward T. Stotesbury, Esq., the eminent banker of Philadelphia, cruised in southern waters last winter in his new cabin cruiser Nedeva. The name is a combination of the first names of its owners. Mr. Stotesbury flies the burgee of the Corinthian Yacht Club of Philadelphia on his yacht



Henna, cream, and blue striped silk curtains contrast pleasantly with the ivory colored walls in Mr. Stotesbury's stateroom. The bedspread is henna, and blue damask covers stool and armchair



The deck furniture on the Nedeve was created exclusively for Mr. Stotesbury; many of the materials used were imported and some were specially designed. The coarse, rough-textured linens used on the deck repeat, in stronger tones, the colors of the yacht's interior. The perfect harmony throughout and the luxury of equipment individuate the Nedeve; it is as comfortable as a well-ordered house



In the saloon, a room with much charm, the walls are of mahogany, harmonizing with the curtains of ecru silk striped in warm rust color with soft green and gold accents. The chairs and little accessories repeat these notes of green, rust, and gold

The eggshell walls in Mrs. Stotesbury's stateroom are glazed with a warm peach glow. Imported modernistic plain silk curtains combine the blue-green of the sea with ivory and tones of peach. Bench and chair take their color from the blue-green of the curtains; the lamps, of alabaster and crystal, have peach colored shades

